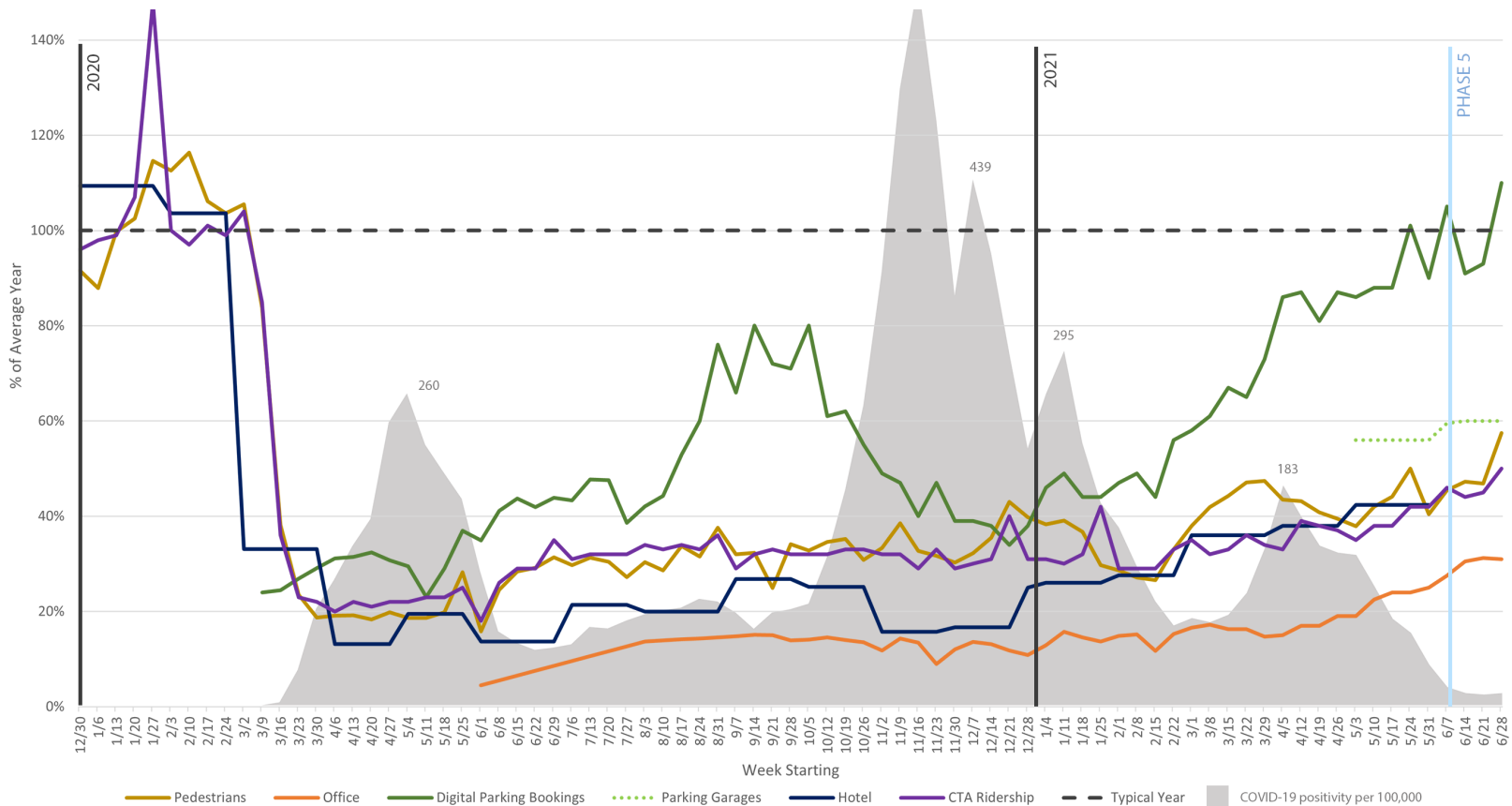


# JUNE BY THE NUMBERS

To help you better understand the status and operational plans of Loop businesses, Chicago Loop Alliance (CLA) has compiled data from multiple sources.

All metrics continued trending upward in June, and in fact all hit their highest levels since the start of the pandemic. Beginning in June, these reports utilize a new dataset for office human occupancy, which tracks all of Chicagoland rather than the Loop specifically. This is because CLA's Loop source decided to no longer track this information, as they lifted restrictions on elevator capacity and building access and reopened amenity floors. They expect office occupancy to continue trending toward normal levels this summer and beyond. That said, the Chicago Loop's office human occupancy levels have aligned very closely with Chicagoland's throughout the pandemic.

Chicagoland's office occupancy remains at pace with the nation; employees are returning to work at similar rates to the Los Angeles and Washington, D.C., metro areas, and Chicagoland is outperforming the New York and Bay Area regions. Pedestrian activity saw its highest week-to-week increase since the start of the pandemic at the end of June, with impressions reaching 57.5% of normal levels. Hotel occupancy also continues to trend upward, and recent self-reported figures for early July note that major Loop hotels are operating at or near capacity.



# YEAR OVER YEAR

**Pedestrian Data:** Chicago Loop Alliance's pedestrian counters track pedestrian activity on State Street. Eighteen counters are located on the east and west sides of State Street from Wacker to Ida B. Wells and count each time a person enters onto State Street. These pedestrians could be employees, visitors, shoppers, residents, students, etc.

**Office Human Occupancy:** Occupancy data is for all of Chicagoland and comes from Kastle Systems International. It is calculated as the percentage of people physically in office buildings compared to the same week in 2019.

**Digital Parking Bookings:** Digital Parking Bookings identifies on-demand reservation services and is calculated as the percentage of parking spots occupied in the Loop compared to the same week in 2019. The data is aggregated based on all Loop parking spots from two anonymous Loop-wide parking operators.

**Parking Garages:** Parking Garages are the aggregation of self-reported occupancy rates from at least two anonymous Loop-wide parking operators. The figure averages the most recently available occupancy rates for the last week of every month, as compared to occupancy rates at the same time in 2019.

**Hotel:** Numbers are based on hotel room occupancy of 15 Loop hotels, provided by STR, Inc

**CTA Ridership:** Ridership is calculated as the percentage of rides on both trains and buses each week compared to the same week in 2019. Source: Chicago Transit Authority and/or Regional Transit Authority

**Covid Positivity:** Covid data is reported as the number of cases per 100,000 residents. This data is not reported as a percentage of 2019, but is meant to show comparisons between reopening data and Covid positivity trends. Source: City of Chicago Covid Dashboard.